

6

5

4

3

2

1

D

D

C

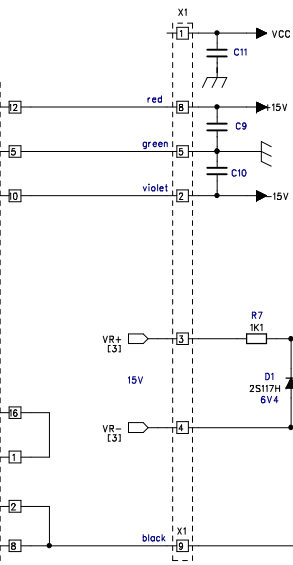
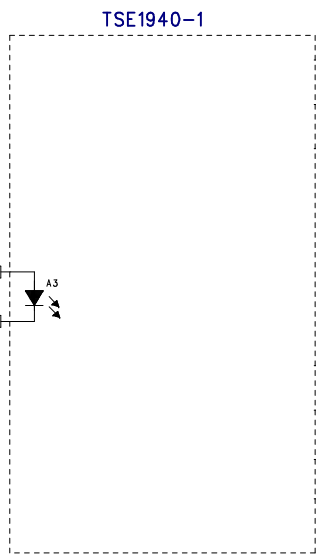
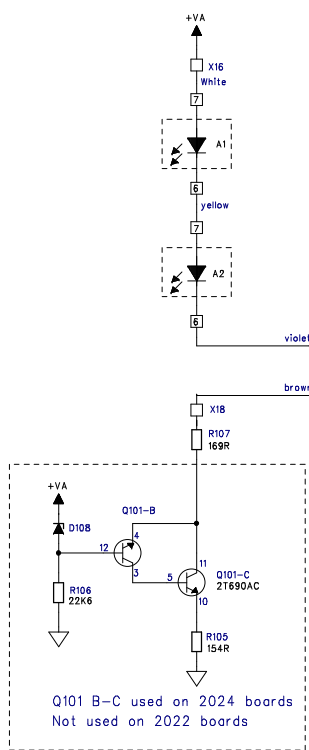
C

B

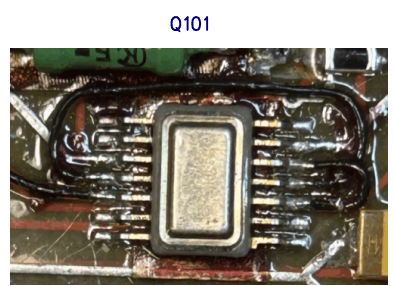
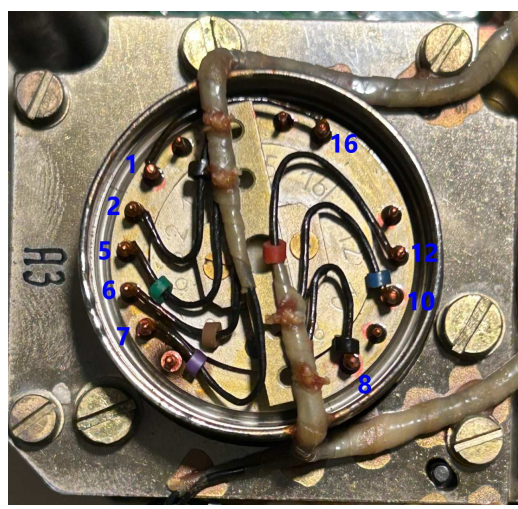
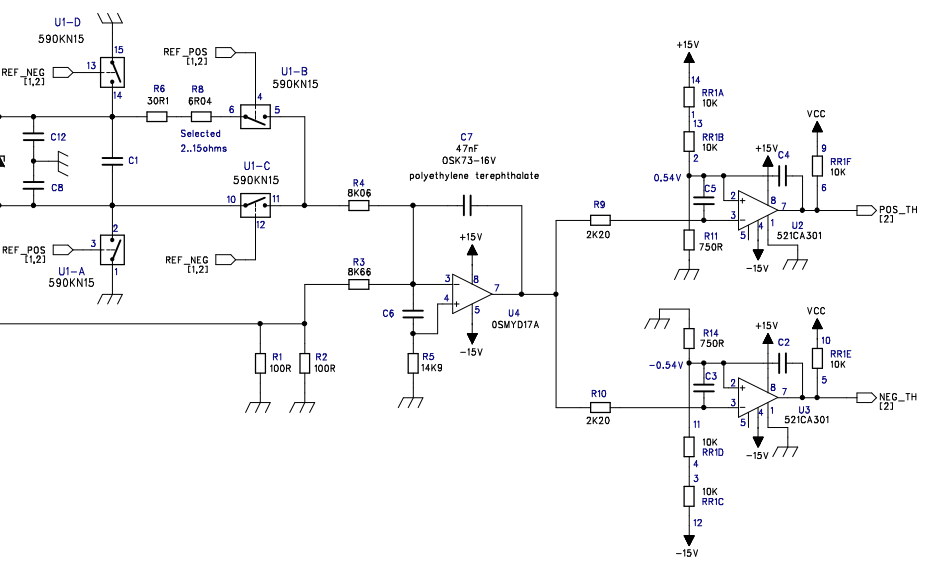
B

A

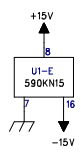
A



REF_NEG	REF_POS	Integrating current
0V	5V	$V_{IN}/R3 - V_{REF}/R4$
5V	0V	$V_{IN}/R3 + V_{REF}/R4$
5V	5V	$V_{IN}/R3$



Q101



Reverse-engineered by M. Waleczek

DRAWN: M. Waleczek		DATED: 22/12/2024		COMPANY: Le labo de Michel			
CHECKED:		DATED:		TITLE: Tornado-S Missile accelerometers assy ADC			
QUALITY CONTROL:		DATED:		CODE:	SIZE:	DRAWING NO: LDM395	REV: C
RELEASED: M. Waleczek		DATED: 07/03/2025		SCALE:			SHEET: 1 OF 4

6

5

4

3

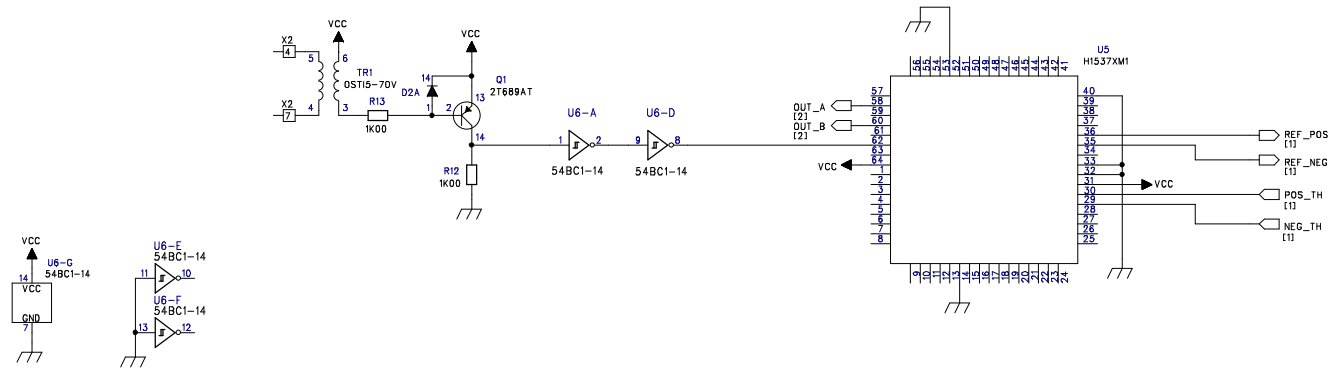
2

1

REVISION RECORD			
LTR	ECO NO:	APPROVED:	DATE:

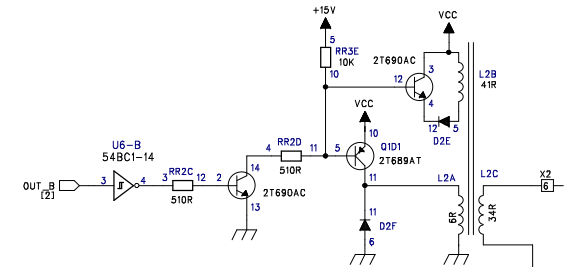
D

D



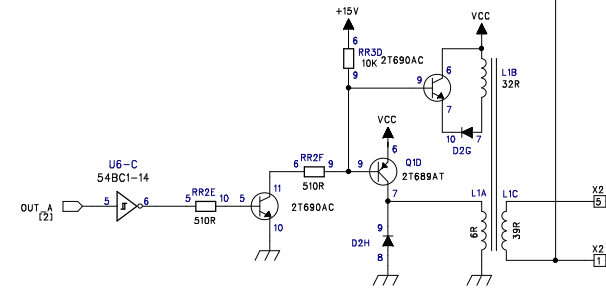
C

C



B

B



A

A



Reverse-engineered by M. Waleczek

COMPANY:		Le labo de Michel	
TITLE:		Tornado-S Missile accelerometers assy Digital circuits	
DRAWN:	M. Waleczek	DATED:	04/01/2025
CHECKED:		DATED:	
QUALITY CONTROL:		DATED:	
RELEASED:	M. Waleczek	DATED:	07/03/2025
CODE:	SIZE:	DRAWING NO:	REV:
		LDM395	C
SCALE:	SHEET: 2 OF 4		

6

5

4

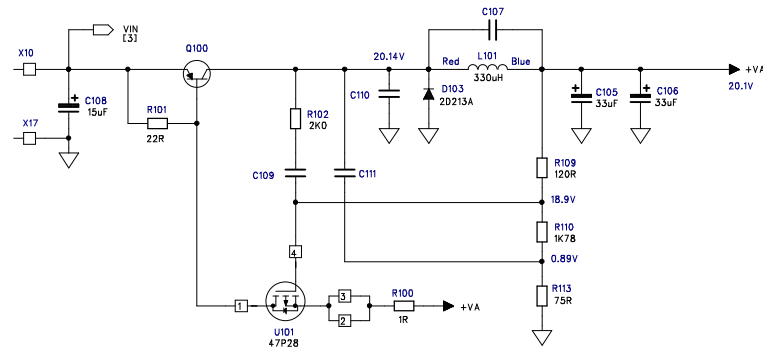
3

2

1

REVISION RECORD			
LTR	ECO NO:	APPROVED:	DATE:

Buck converter



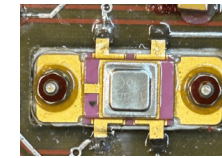
D103



L101



U01



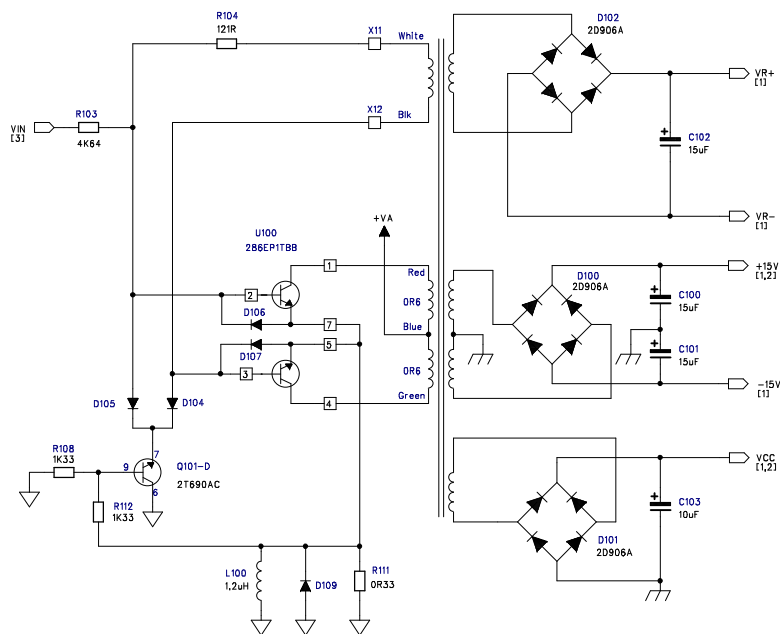
D

D

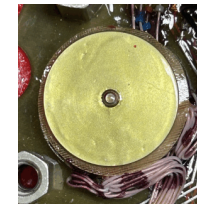
C

C

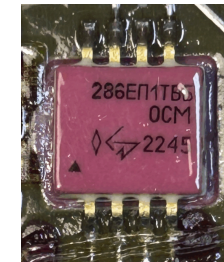
TR1



TR1



U100



3X



B

B

A

A

Reverse-engineered by M. Waleczek

COMPANY: Le labo de Michel

TITLE: Tornado-S Missile accelerometers assy Power supply board

DRAWN: M. Waleczek DATED: 22/12/2024

CHECKED: DATED:

QUALITY CONTROL: DATED:

RELEASED: M. Waleczek DATED: 07/03/2025

CODE:	SIZE:	DRAWING NO:	REV:
		LDM395	C

SCALE: SHEET: 3 OF 4

6

5

4

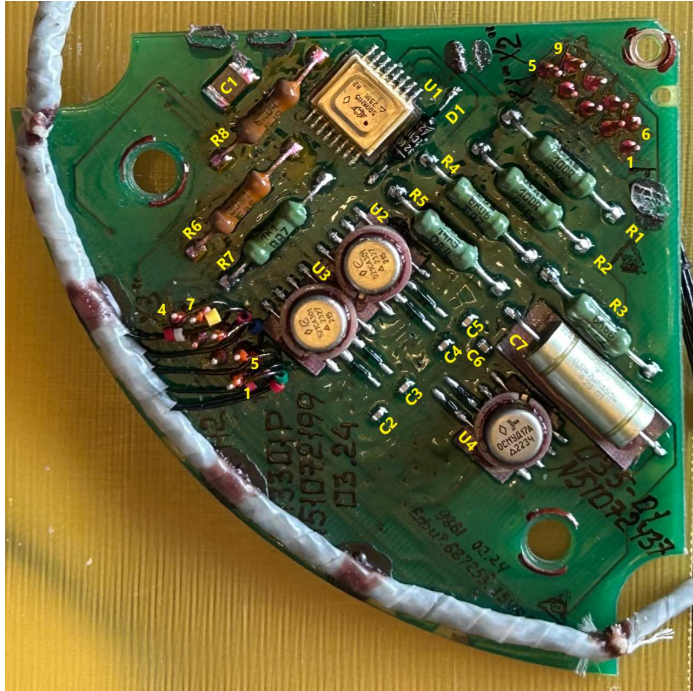
3

2

1

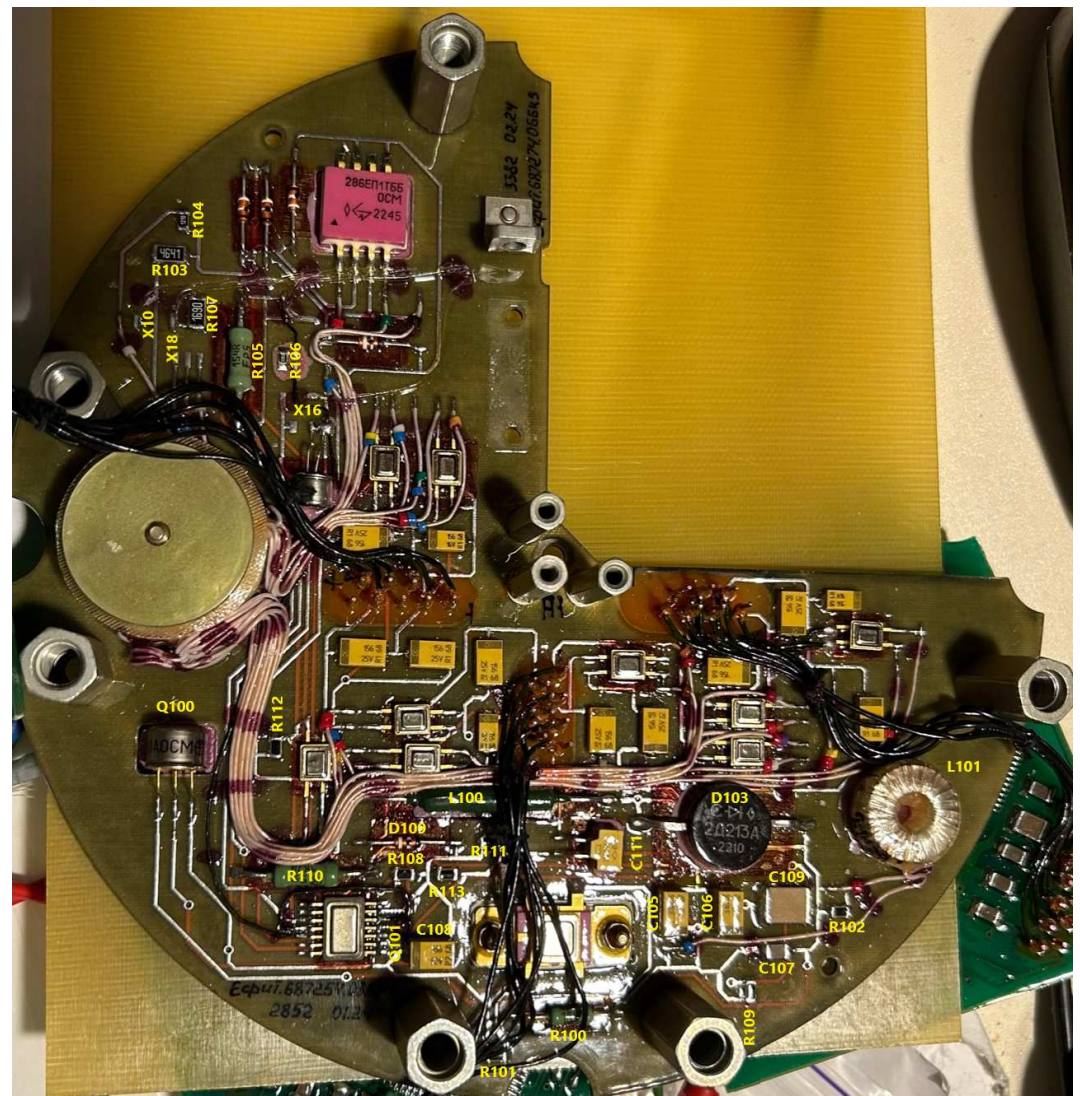
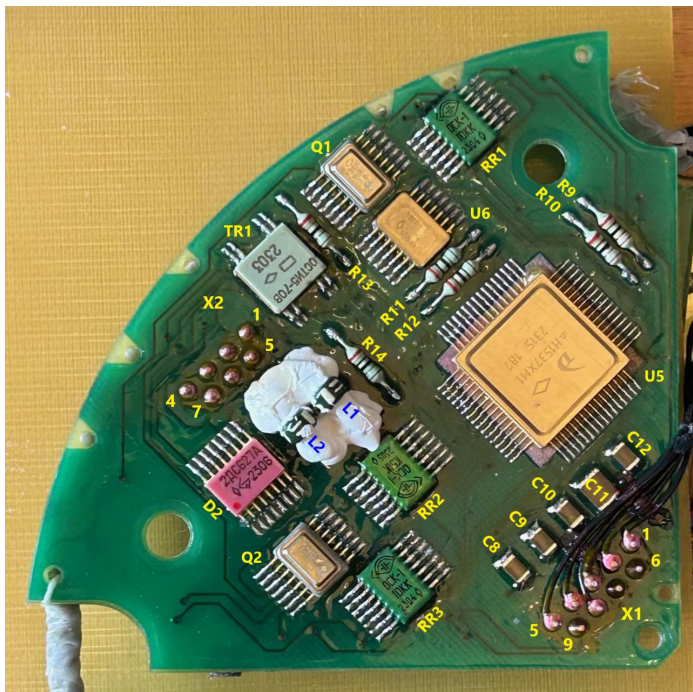
D

C



B

A



D

C

B

Reverse-engineered by M. Waleczek

COMPANY: Le labo de Michel

TITLE: Tornado-S Missile accelerometers assy References

DRAWN: M. Waleczek	DATED: 04/01/2025
CHECKED:	DATED:
QUALITY CONTROL:	DATED:
RELEASED:	DATED:

CODE:	SIZE:	DRAWING NO: LDM395	REV: C
SCALE:			SHEET: 4 OF 4

A